

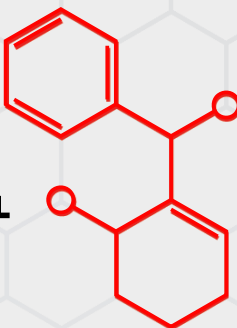


JUTA GP[®] SAM – Gas Protection – Self Adhesive Membrane, is a bituminous gas proof and water proof sheet, composed of self-adhesive SBS polymer modified bitumen incorporating an aluminium foil with an upper surface finish of white cross laminated HDPE, and a lower surface finish of siliconized paper release film. JUTA GP[®] SAM is used for the gas/waterproofing of underground structures where harmful ground gasses are anticipated.



JUTA GP [®] SAM			
Characteristic	Test Method	Unit	GP [®] SAM
Physical Properties			
Thickness	EN 1849-2	mm	1.00
Width	EN 1849-2	M	0.3 or 1
Length	EN 1849-2	M	20
Weight	EN 1849-2	g/m ²	1100
Hydraulic Properties			
Watertightness	✓ EN 1928	-	PA55
Water Vapour Transmission	EN 1931	g/m ² /day	0.013
Mechanical Properties			
Tensile Strength (MD/CMD)	EN12311-2	N/mm ²	3
Elongation (MD/CMD)	EN 12311-2	%	>120
Resistance to Static Load	EN 12370	kg	20kg
Joint Strength	EN 12317-2	N	>30
Durability and Water tightness (ageing and chemicals)	EN 1847	-	PA55
Resistance to Nail Tear (MD/CMD)	EN 12310-1	N	>100
Reaction to Fire	EN 13501	Euro Class	F
Gas Permeability			
Methane Permeability	BS EN ISO 15105 - 1	ml/m ² /day/atm	< 0.53
Carbon Dioxide Permeability	BS EN ISO 15105 - 1	ml/m ² /day/atm	< 0.53
Radon Permeability	K124/02/95	m ² /s	5.0 x 10 ⁻¹⁴

JUTA GP[®] SAM complies with the latest codes of practice as published by BRE, CIRIA and BSI (BS 8485:2015).



Additional Information

HANDLING

Roll weights can be in excess of 20kg (approx. 33kg/roll) and hence appropriate care and equipment is required for unloading and handling. This product is non-toxic nor flammable.

STORAGE

Rolls of JUTA GP® SAM should be stored horizontally, and pallets should not be stacked on top of one another.

JUTA GP® SAM should be stored in a cool, dry place, and be protected from exposure to rain, sun, heat and cold temperatures prior to installation. Exposure to sunlight for extended period of time could cause difficulty with removal of the release film.

INSTALLATION

JUTA GP® SAM should be installed in accordance with the product installation guidelines, and in accordance with BS 8485:2015.

It is recommended that JUTA GP® SAM is not applied in temperatures below 10 °C, in colder weather the material can be warmed slightly to aid adhesion.

ACCESSORY PRODUCTS



JUTA GP® Primer



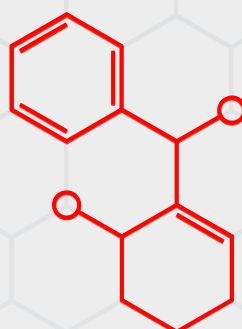
JUTA GP® Protection Board



JUTA GP® Protection Fleece

PLEASE CONTACT JUTA UK DIRECTLY FOR MORE INFORMATION ON JUTA GP® SAM

Contact us to find out more information.
info@juta.co.uk | 01772 754177 | JUTA.CO.UK
Melton Grove Works, Church Road, Lytham, FY8 5PL



JUTA



riba
product
selector